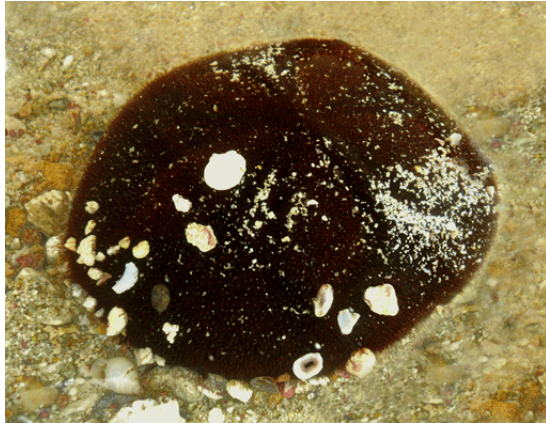


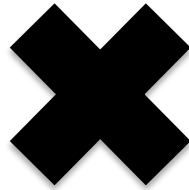
The evolution of larval developmental mode in Echinoderms



Smithsonian
Institution

Frances Armstrong – Grosberg Lab

The evolution of larval developmental mode in Echinoderms



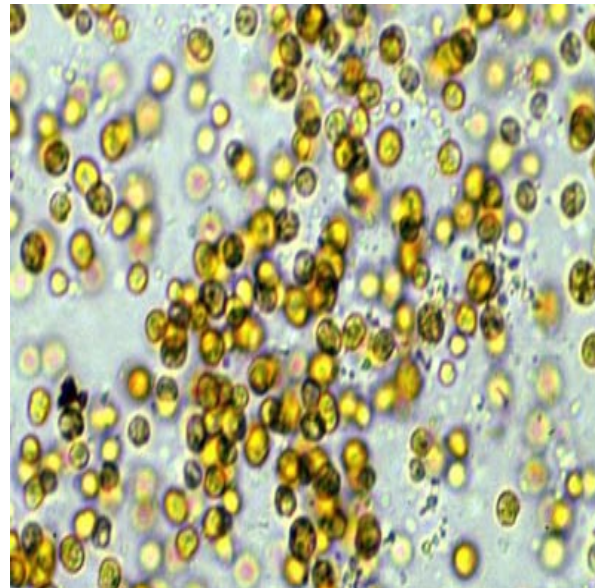
Smithsonian
Institution

Frances Armstrong - Grosberg Lab

Host-symbiont interactions across local environmental gradients and species ranges

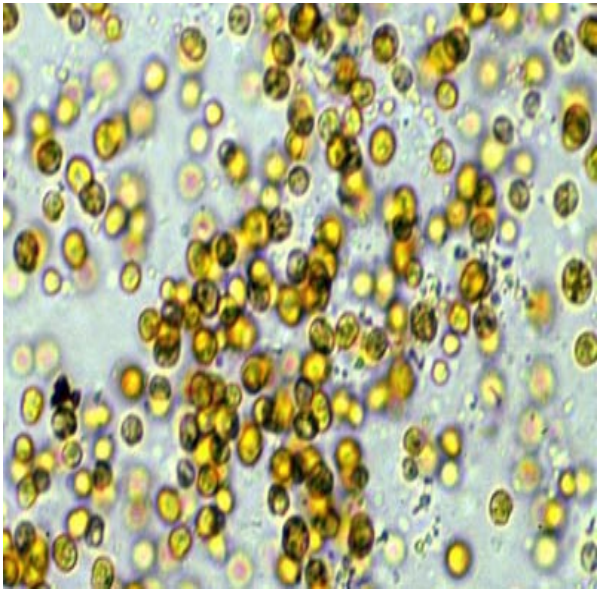


Host-symbiont interactions across local environmental gradients and species ranges



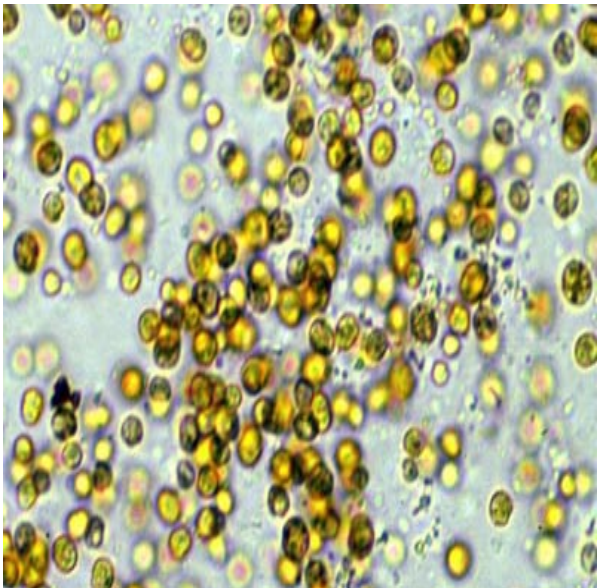
Brendan Cornwell - Grosberg Lab

Host-symbiont interactions across local environmental gradients and species ranges

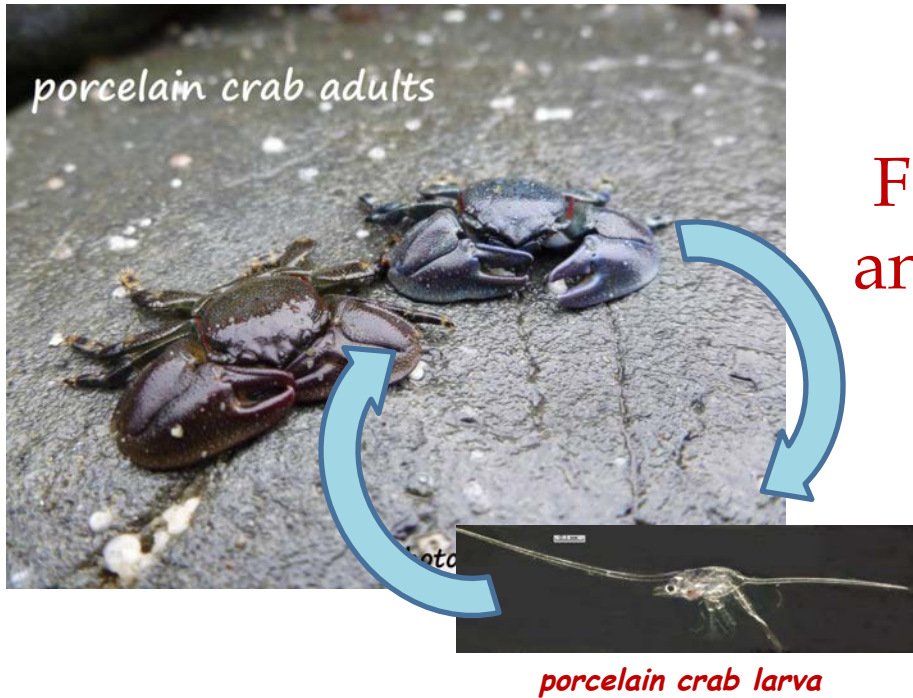


Brendan Cornwell - Grosberg Lab

Host-symbiont interactions across local environmental gradients and species ranges



Brendan Cornwell - Grosberg Lab



Fine Scale Population Structure and Dispersal in Porcelain Crabs

Chris Griesemer
Morgan/Grosberg Labs

